



### 36m<sup>2</sup> CHALLENGE

**FACTRETON HOUSE ALTERATION, CAPE TOWN** Architects: Mobile Space Concept: Aram Lello | Factreton House Renovation: Tsai Design Studio in association with Aram Lello | Project Team: Shoebox Homes / Men on the side of the road / Pick n Pay Ackerman Foundation | Structural Engineers: Wahied Boltman from LC Consulting | Contractor: O'Sullivan Project Management | Joinery: Olde Hands Interiors | Photographer: Ricky FairBairn

**NESTED BUNK BEDS, WELLINGTON AIDS ORPHANAGE, WELLINGTON** Architects: Tsai Design Studio | Project Team: Helping Hand / Pick n Pay Ackerman Foundation / Shoebox Homes / Wang Thai group (everyone involved worked pro bono on the charity project) | Quantity Surveyor: Heren Manni from Henry & Petersen QS | Contractor: Faizel Khan from FABE Property Developers | Joinery: Olde Hands Interiors | Photographer: Y Tsai

The Pick n Pay 36m<sup>2</sup> Design Challenge was intended to provide the opportunity for an innovative approach to the problems of tiny, overcrowded, low-cost houses.

Men on the Side of the Road (MSR), an award-winning NGO which trains unemployed men in a variety of skills including many facets of building, co-ordinated the competition. 'Too many people and not enough space are at epidemic levels in low-cost housing. It's normal for six to eight people to share 36m<sup>2</sup>,' says Charles Maisel of MSR. 'Regimented, chronically overcrowded, tiny houses with no design flexibility, consideration for cultural diversity, privacy or personal space. This mix is certain to spawn a wealth of social problems, from desperation and violence to crime and escapism through alcohol and drug use.'

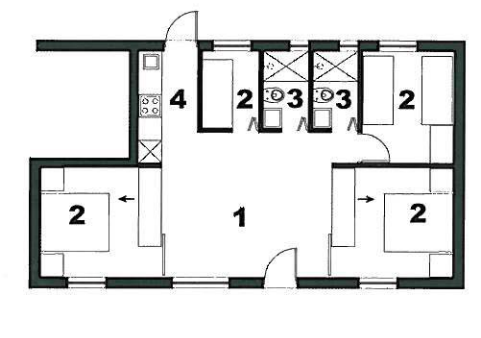
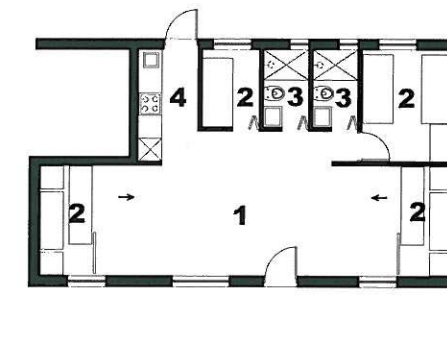
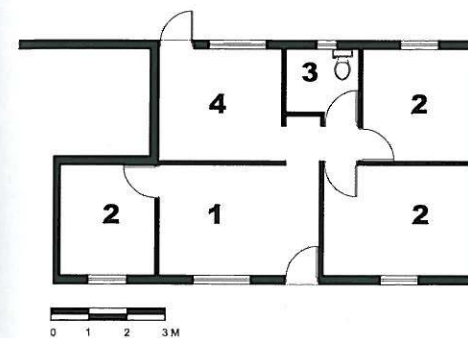
The two winners of the 36m<sup>2</sup> Design Challenge are architect Aram Lello, for space utilisation, and Y Tsai of Tsai Design Studio, for furniture design.

The core of Aram Lello's concept is the creation of choices

through adaptable living space that serves the family's dynamics. Multi-functional, movable dividing walls that are mounted on wheels, and ceiling rails that lock into place, provide the ultimate flexible space. These dividing walls, complete with doors, also provide endless permutations for storage that is accessible from both rooms.

One of Tsai Design Studio's innovative concepts was Nested Bunk Beds. Beds command a great deal of space, however the Nested Bunk Bed system can comfortably sleep five and be packed away into a standard bunk bed area. Sections can be pulled out to serve a number of purposes. During the day it can be used as a normal sofa with only the two lower beds pulled out, or it can seat a crowd in grandstand-like seating. At night it can be fully extended to provide five good-sized beds.

Through the generous support of the Pick n Pay Ackerman Foundation and MSR, the winners were presented with two actual projects in which to put their concepts to good use.



#### PROJECT #1: FACTRETON HOUSE ALTERATION, CAPE TOWN

Aram Lello's idea of adaptable living space using mobile cupboards and fold-up beds was put to the test in a 40-year-old house in Fractreton, housing a family of 10. Tsai Design Studio collaborated with Aram Lello in the design, detailing and implementation of the concept.

The process involved the demolition of most of the interior walls, enabling a new floor layout to maximise space usage. The new plan consists of a versatile living area flanked by two bedrooms,

separated by mobile wall partitions. During the day the bedrooms can be made smaller by pushing the partitions back. This enlarges the living area by 4m, creating flexible space for a multitude of purposes. At night the partitions are pushed forward to create two sizeable bedrooms. This expansion and retraction of bedroom space is made possible by a fold-up double bed in the bedrooms that fits snugly into a boxed wall unit with cupboards on either side.